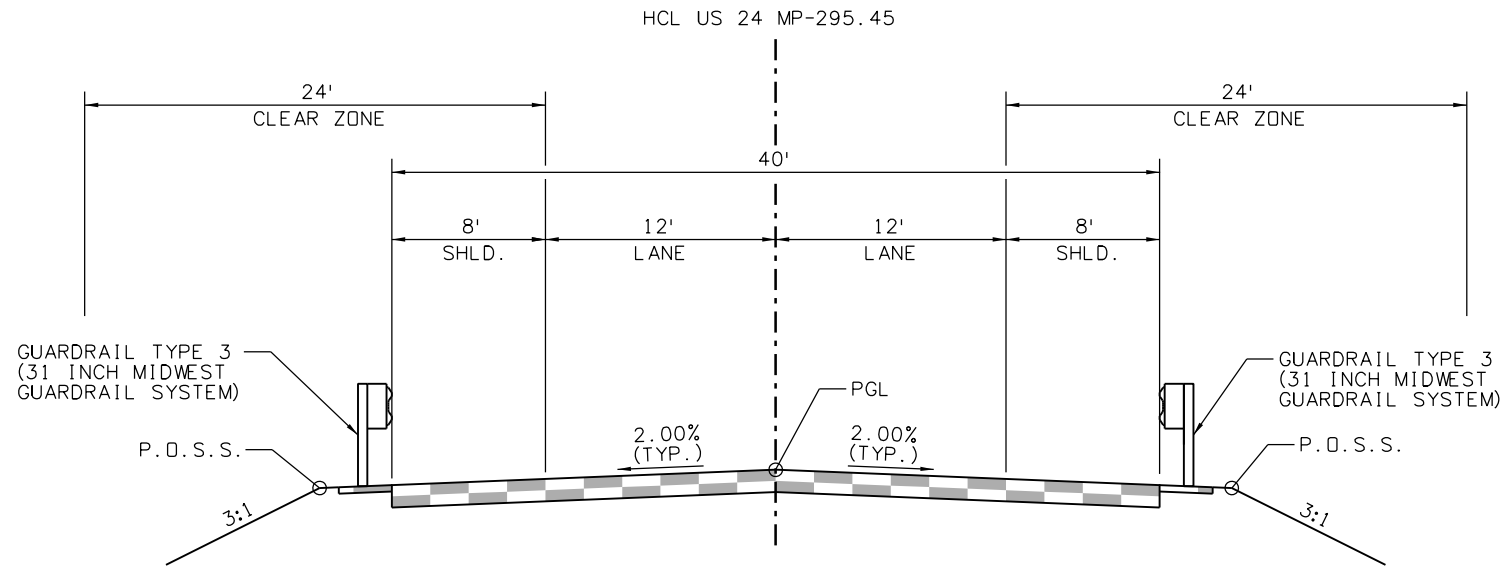


9356 10:50:11 AM p:\SCI-PW\INTEG-2.stanleygroup.com\Datasource-1\Documents\Colorado_Department_of_Transportation\29715 - CDDT R2 Bridge Bundle\11-CADD\Worksheets\29715\Design\Sheets\23558DES_US 24 MP 295.45_Typ.dgn



US 24 MP-295.45
TYPICAL SECTION
 440+51.77 TO 441+64.44

Print Date: 2/16/2021 File Name:

23558DES_US 24 MP 295.45_Typ.dgn

Horiz. Scale: Vert. Scale: As Noted



Stanley Consultants INC.
 8000 South Chester St.
 Suite 500
 Centennial, CO 80112
 Phone: 303-799-6806

Sheet Revisions

Date:	Comments	Init.

Colorado Department of Transportation



5615 Wills Blvd
 Pueblo, CO 81008
 Phone: 719-546-5753
 FAX: 719-546-5402

Region 2

JLS

As Constructed

No Revisions:

Revised:

Void:

REGION 2 BRIDGE BUNDLE
US 24 OVER FOUNTAIN CREEK
TYPICAL SECTIONS

Designer: R. HANSON Structure No. I-17-X

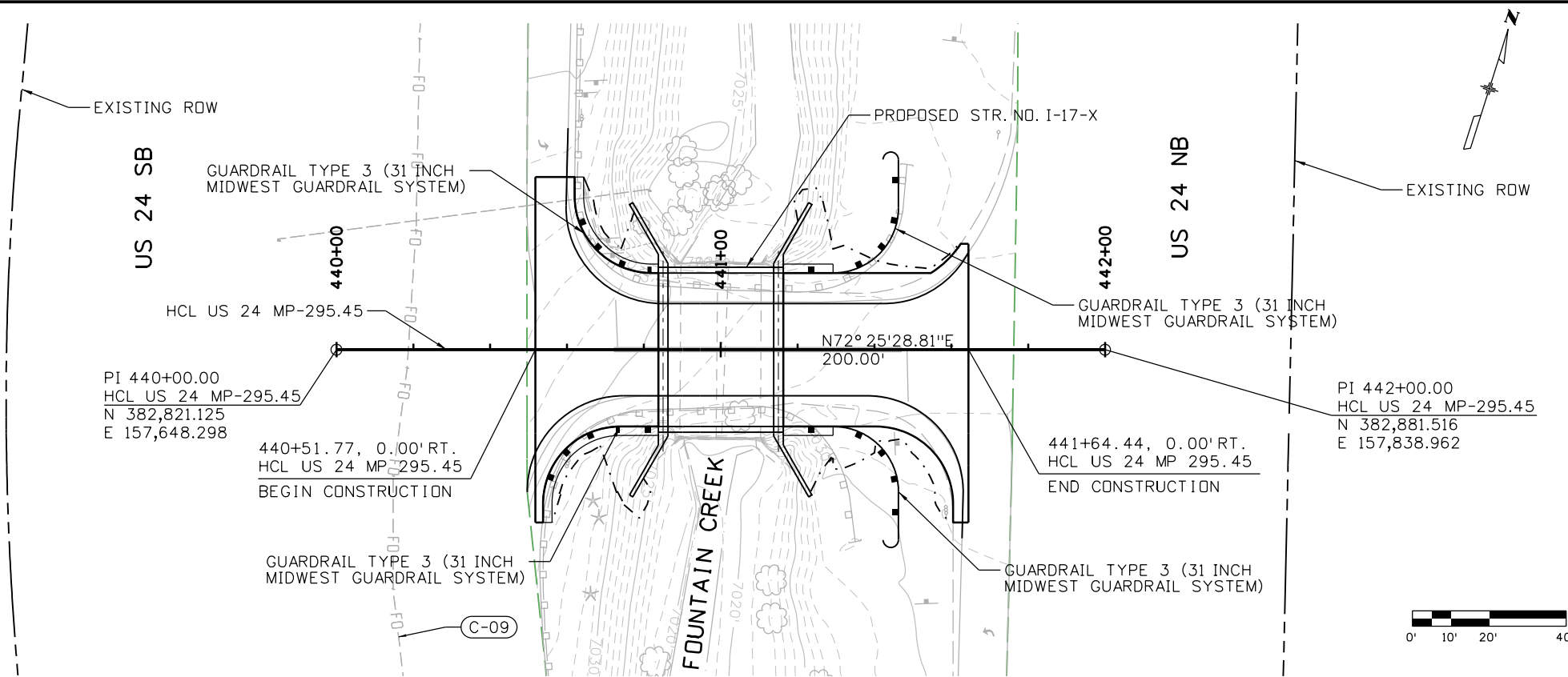
Detailer: E. LUETH M.P. US 24 295.45

Sheet Subset: TYP Subset Sheets: 1 of 1

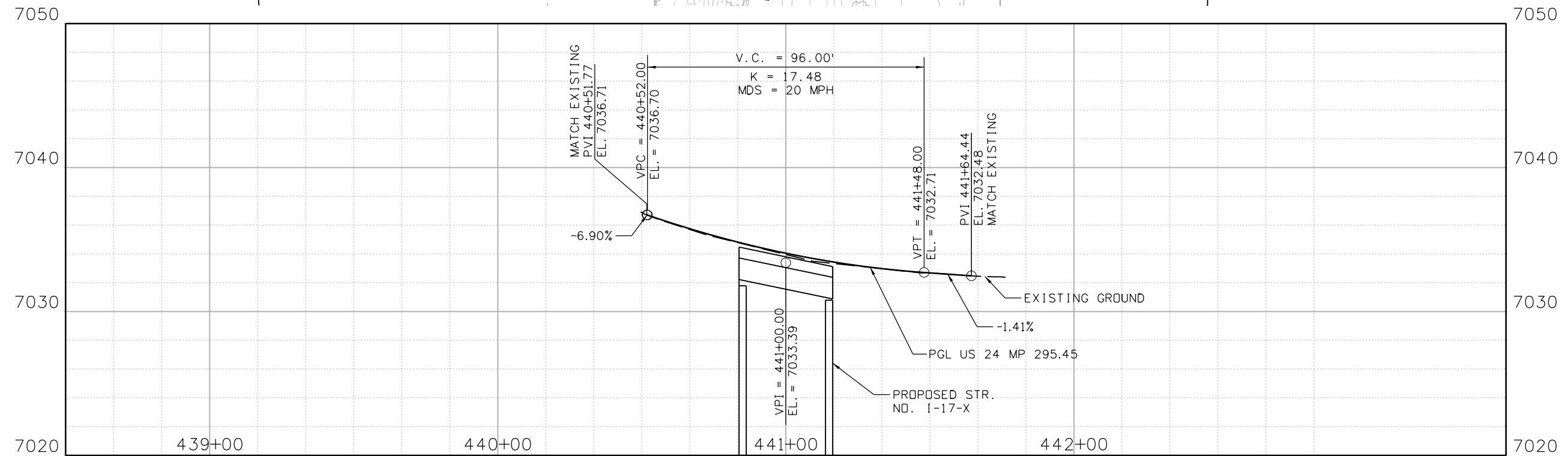
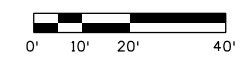
Project No./Code

Sheet Number

9356 10:50:23 AM pw:\SCI-PW\INTEC-2.stanleygroup.com\Dat\source-1\Documents\Colorado_Department_of_Transportation\29715 - CDDT R2 Bridge Bundle\11-CADD\Worksets\29175.DGN\Design\Sheets\23558DES_US_24_MP_295.45_P&P_Sheets.dgn



LEGEND:
 (C-19) - UTILITY ID NO.



Print Date: 2/16/2021 File Name: 23558DES_US_24_MP_295.45_P&P_Sheets.dgn
 Horiz. Scale: Vert. Scale: As Noted
Stanley Consultants INC. 8000 South Chester St. Suite 500 Centennial, CO 80112 Phone: 303-799-6806

Sheet Revisions		
Date:	Comments	Init.

Colorado Department of Transportation
 5615 Wills Blvd
 Pueblo, CO 81008
 Phone: 719-546-5753
 FAX: 719-546-5402

Region 2 JLS

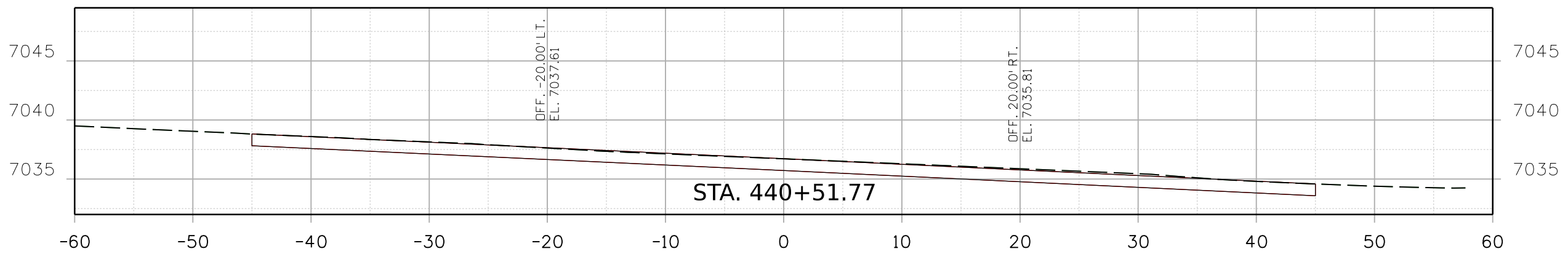
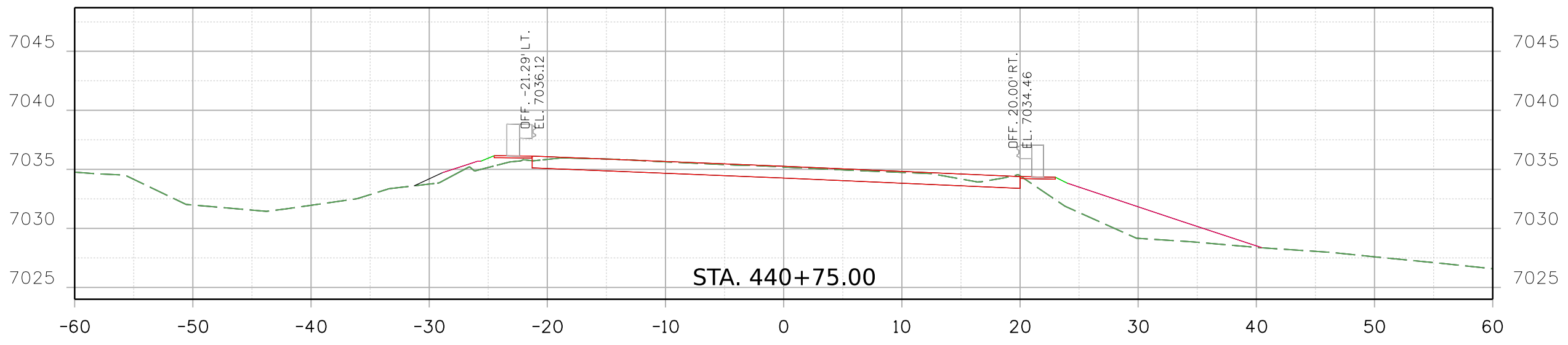
As Constructed
 No Revisions:
 Revised:
 Void:


REGION 2 BRIDGE BUNDLE
US 24 OVER FOUNTAIN CREEK
ROADWAY PLAN AND PROFILE

Designer: R. HANSON Structure No. I-17-X
 Detailer: R. HANSON M.P. US 24 295.45
 Sheet Subset: ROADWAY Subset Sheets: 1 of 1


Project No./Code
 Sheet Number

9356 10:50:34 AM p:\SCI-PW\INTEC-2\stanleygroup.com\Datasource-1\Documents\Colorado_Department_of_Transportation\29715 - CDDT R2 Bridge Bundle\11-CADD\Worksets\29175\DCNs\Design\Sheets\23558DES_US_24_MP_295.45_Xsec.dgn



Print Date: 2/16/2021 File Name:
 23558DES_US_24_MP_295.45_Xsec.dgn
 Horiz. Scale: Vert. Scale: As Noted

 Stanley Consultants INC.
 8000 South Chester St.
 Suite 500
 Centennial, CO 80112
 Phone: 303-799-6806

Sheet Revisions		
Date:	Comments	Init.

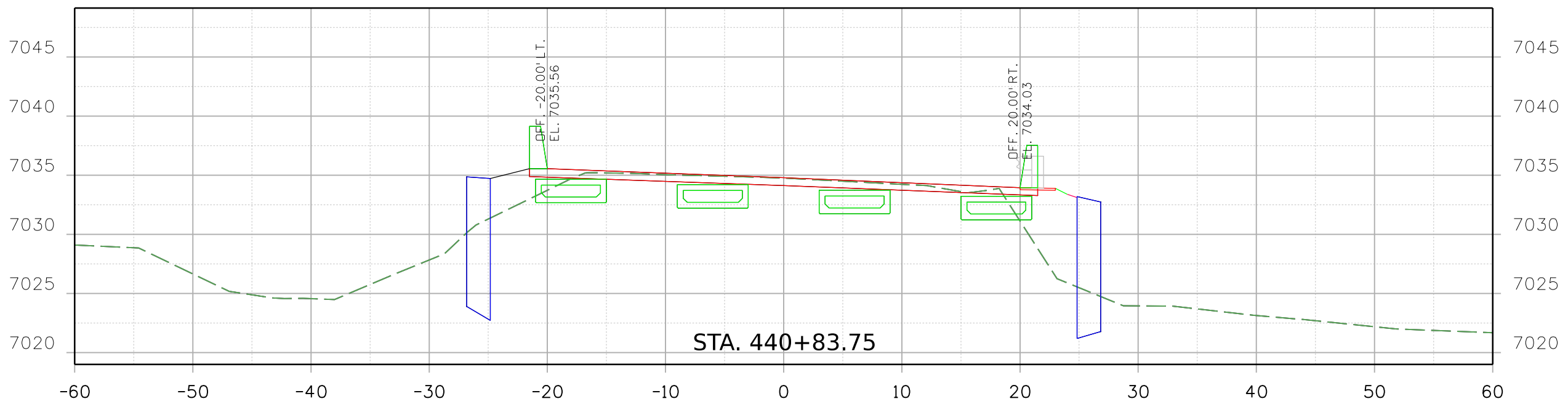
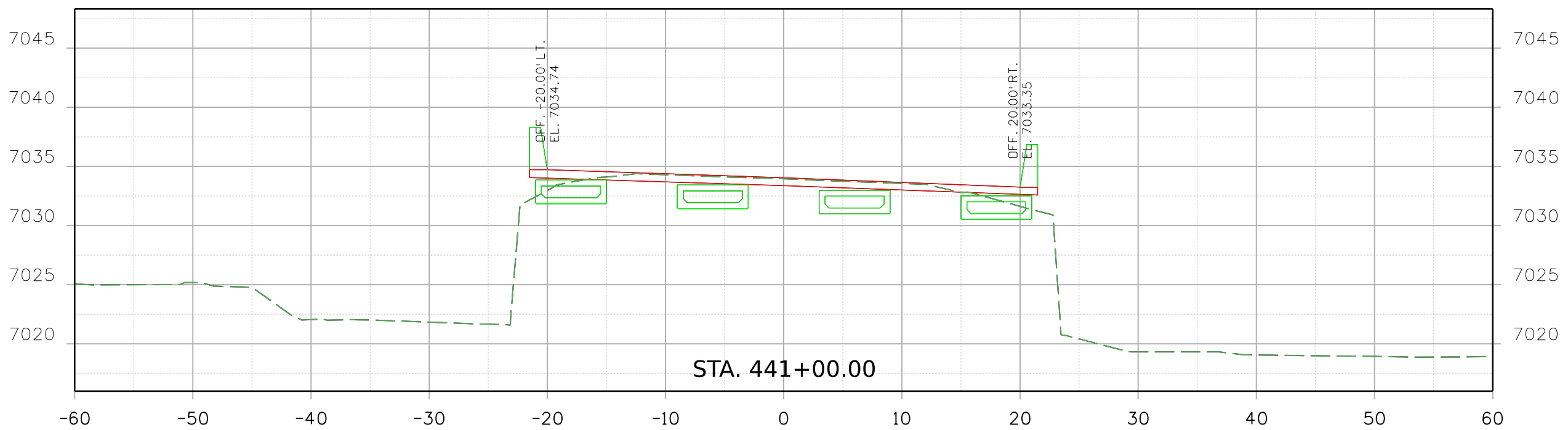
Colorado Department of Transportation

 Region 2
 5615 Wills Blvd
 Pueblo, CO 81008
 Phone: 719-546-5753
 FAX: 719-546-5402
 JLS


As Constructed
 No Revisions:
 Revised:
 Void:

REGION 2 BRIDGE BUNDLE
 US 24 OVER FOUNTAIN CREEK
 CROSS SECTIONS
 Designer: R. HANSON Structure No. I-17-X
 Detailer: R. HANSON M.P. US 24 295.45
 Sheet Subset: XSEC Subset Sheets: 1 of 4


Project No./Code
 Sheet Number

9356 10:50:35 AM pw:\SCI-PW\INTEC-2.stanleygroup.com\Dat\source-1\Documents\Colorado_Department_of_Transportation\29715 - CDDT R2 Bridge Bundle\11-CADD\Worksets\29175.DGN\Design\Sheets\23558DES_US_24_MP_295.45_Xsec.dgn



Print Date: 2/16/2021 File Name:
 23558DES_US_24_MP_295.45_Xsec.dgn
 Horiz. Scale: Vert. Scale: As Noted

 Stanley Consultants INC.
 8000 South Chester St.
 Suite 500
 Centennial, CO 80112
 Phone: 303-799-6806

Sheet Revisions		
Date:	Comments	Init.

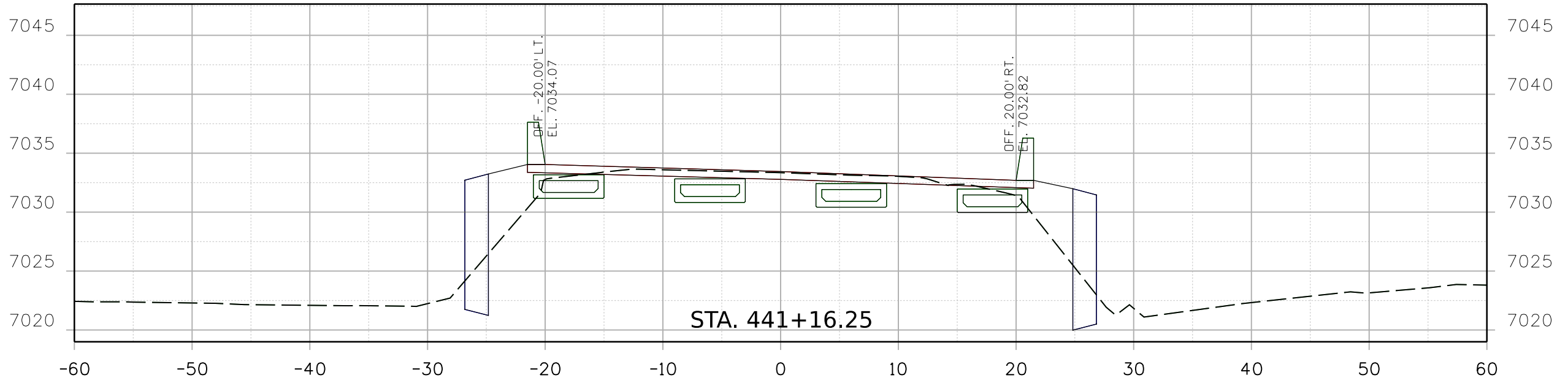
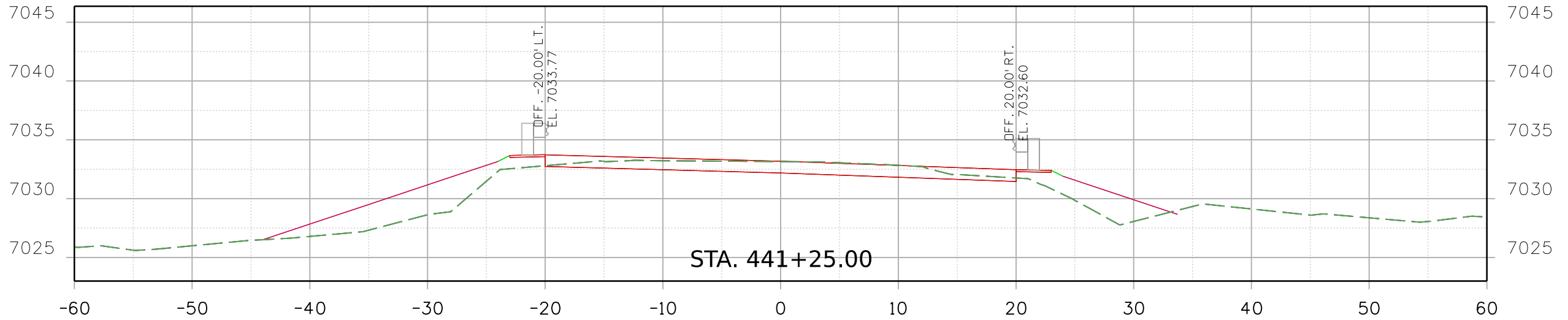
Colorado Department of Transportation

 5615 Wills Blvd
 Pueblo, CO 81008
 Phone: 719-546-5753
 FAX: 719-546-5402
 Region 2 JLS

As Constructed
No Revisions:
Revised:
Void:

REGION 2 BRIDGE BUNDLE US 24 OVER FOUNTAIN CREEK CROSS SECTIONS			
Designer:	R. HANSON	Structure No.	I-17-X
Detailer:	R. HANSON	M.P.	US 24 295.45
Sheet Subset:	XSEC	Subset Sheets:	2 of 4

Project No./Code
Sheet Number


9356 10:50:36 AM pw:\SCI-PW\INTEC-2.stanleygroup.com\Databases\Colorado_Department_of_Transportation\29715 - CDOT R2 Bridge Bundle\11-CADD\Worksets\29715.DGNs\Design\Sheets\23558DES_US_24_MP_295.45_Xsec.dgn



Print Date: 2/16/2021 File Name:
23558DES_US_24_MP_295.45_Xsec.dgn
Horiz. Scale: Vert. Scale: As Noted



Sheet Revisions		
Date:	Comments	Init.

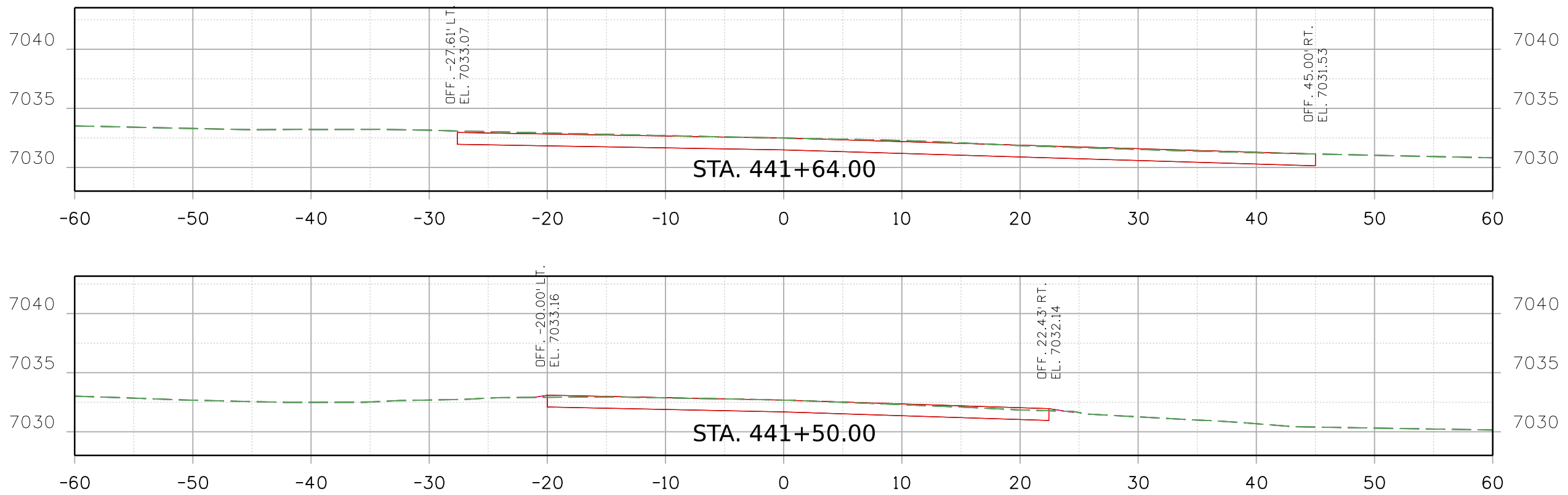
Colorado Department of Transportation

 5615 Wills Blvd
 Pueblo, CO 81008
 Phone: 719-546-5753
 FAX: 719-546-5402
 Region 2 JLS


As Constructed
No Revisions:
Revised:
Void:

REGION 2 BRIDGE BUNDLE US 24 OVER FOUNTAIN CREEK CROSS SECTIONS			
Designer:	R. HANSON	Structure No.	I-17-X
Detailer:	R. HANSON	M.P.	US 24 295.45
Sheet Subset:	XSEC	Subset Sheets:	3 of 4

Project No./Code
Sheet Number

9356 10:50:37 AM pw:\SCI-PW\INTEC-2\stanleygroup.com\Datasource-1\Documents\Colorado\Department_of_Transportation\29715 - CDDT R2 Bridge Bundle\11-CADD\Worksets\29175.DGNs\Design\Sheets\23558DES_US_24_MP_295.45_Xsec.dgn



Print Date: 2/16/2021 File Name:
 23558DES_US_24_MP_295.45_Xsec.dgn
 Horiz. Scale: Vert. Scale: As Noted

 8000 South Chester St.
 Suite 500
 Centennial, CO 80112
 Phone: 303-799-6806

Sheet Revisions		
Date:	Comments	Init.

Colorado Department of Transportation

 5615 Wills Blvd
 Pueblo, CO 81008
 Phone: 719-546-5753
 FAX: 719-546-5402
 Region 2 JLS

As Constructed
 No Revisions:
 Revised:
 Void:

REGION 2 BRIDGE BUNDLE
 US 24 OVER FOUNTAIN CREEK
 CROSS SECTIONS
 Designer: R. HANSON Structure No. I-17-X
 Detailer: R. HANSON M.P. US 24 295.45
 Sheet Subset: XSEC Subset Sheets: 4 of 4

Project No./Code
 Sheet Number